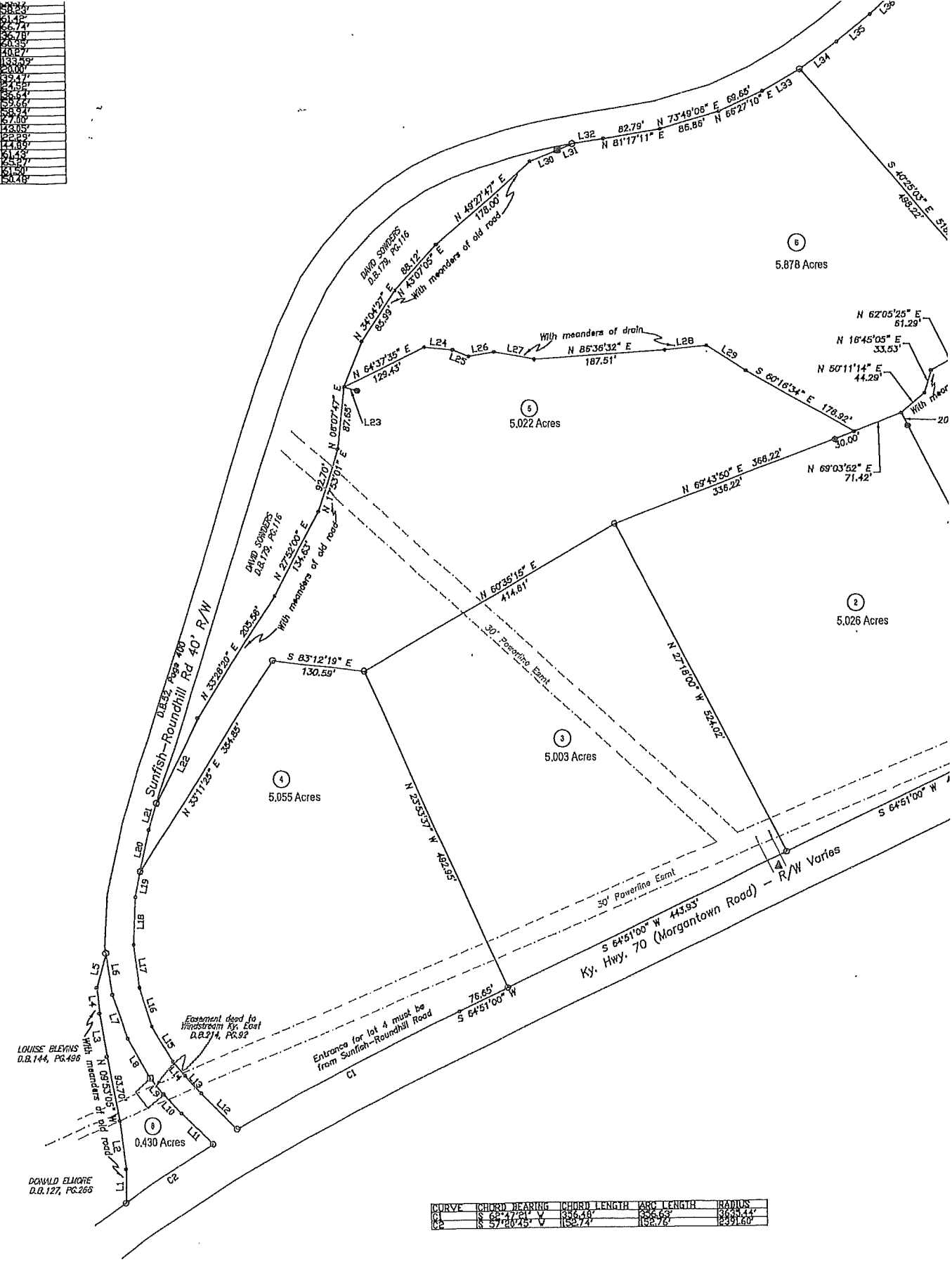


61.42
61.43
61.44
61.45
61.46
61.47
61.48
61.49
61.50
61.51
61.52
61.53
61.54
61.55
61.56
61.57
61.58
61.59
61.60
61.61
61.62
61.63
61.64
61.65
61.66
61.67
61.68
61.69
61.70
61.71
61.72
61.73
61.74
61.75
61.76
61.77
61.78
61.79
61.80
61.81
61.82
61.83
61.84
61.85
61.86
61.87
61.88
61.89
61.90
61.91
61.92
61.93
61.94
61.95
61.96
61.97
61.98
61.99
62.00



CURVE	CHORD BEARING	CHORD LENGTH	ARC LENGTH	RADIUS
C1	S 67°17'21\"	836.40'	836.63'	8663.14'
C2	S 57°20'25\"	152.74'	152.72'	8391.60'